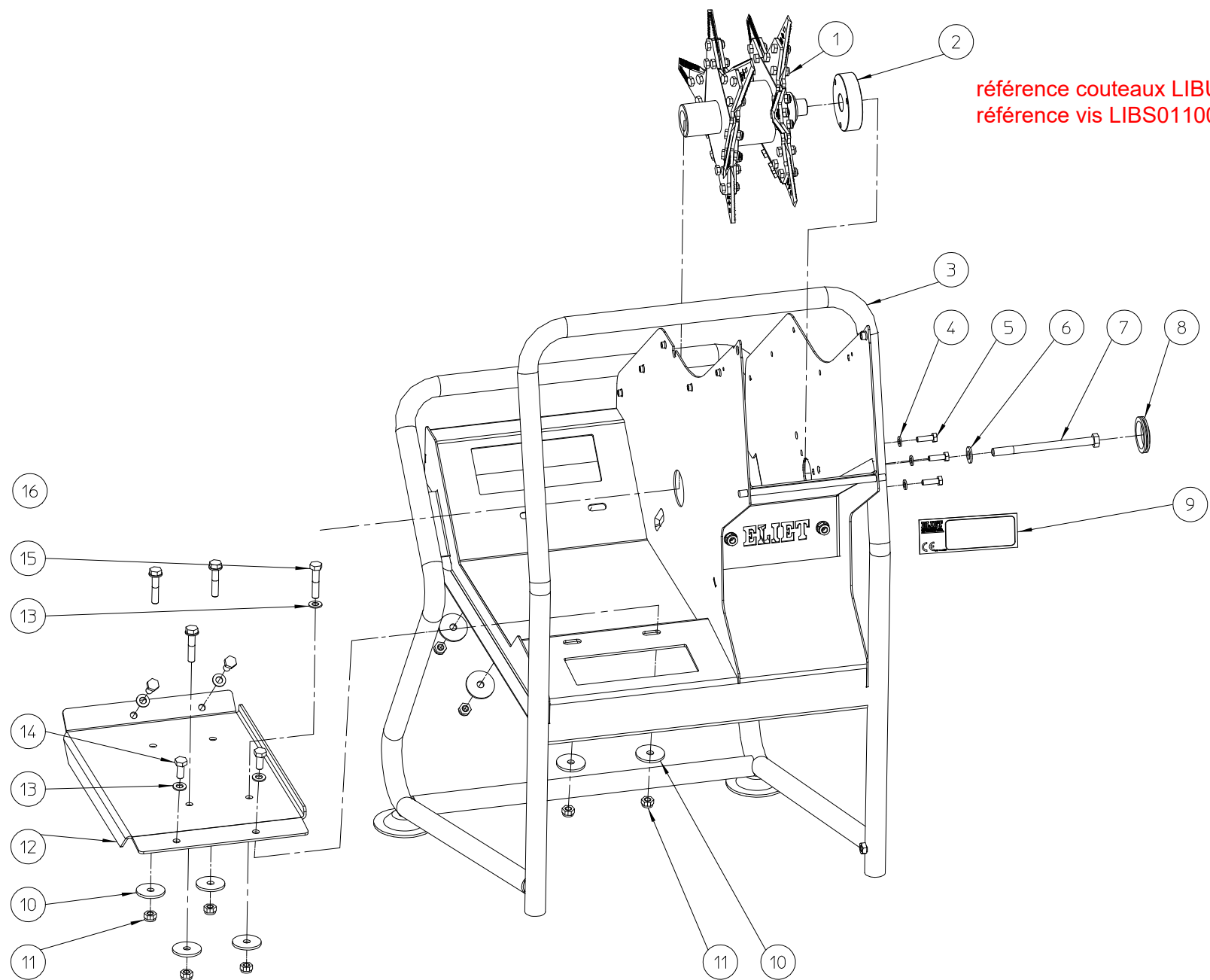


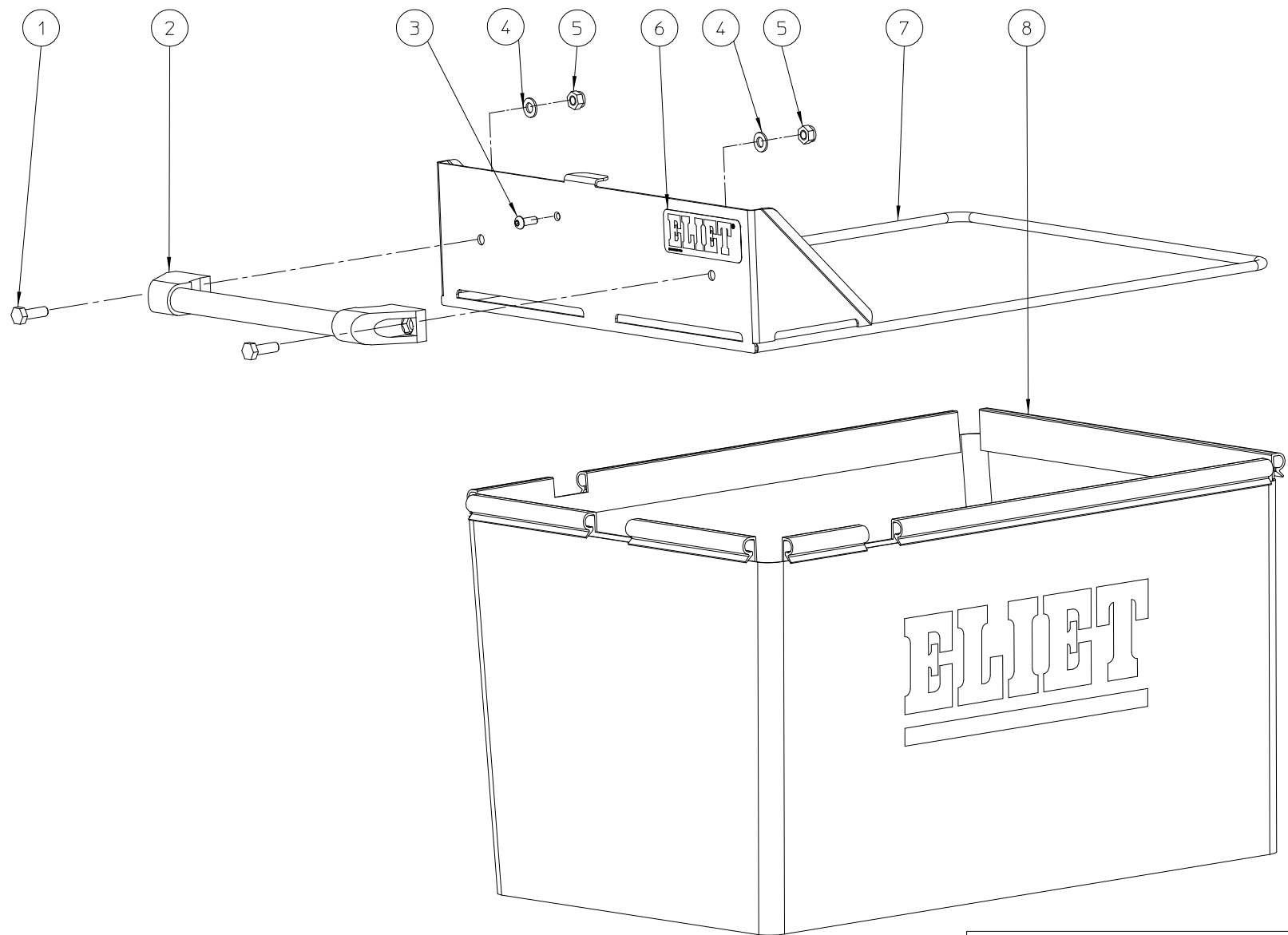
| ELIET MAESTRO CITY -- GENERAL | | | | | |
|-------------------------------|----------------|-----|---|------|------------|
| NO | MMA 01 221 200 | REV | 1 | DATE | 2017/09/12 |

| # | N° article | Description | quantité |
|---|----------------|------------------|----------|
| 1 | MMA 01 221 240 | moteur-rotor | 1 |
| 2 | MMA 01 221 230 | sac de ramassage | 1 |
| 3 | MMA 01 221 250 | chassis | 1 |
| 4 | MMA 01 221 210 | entonnoir | 1 |
| 5 | MMA 01 221 160 | electricite | 1 |
| 6 | MMA 01 221 120 | support-roue | 1 |



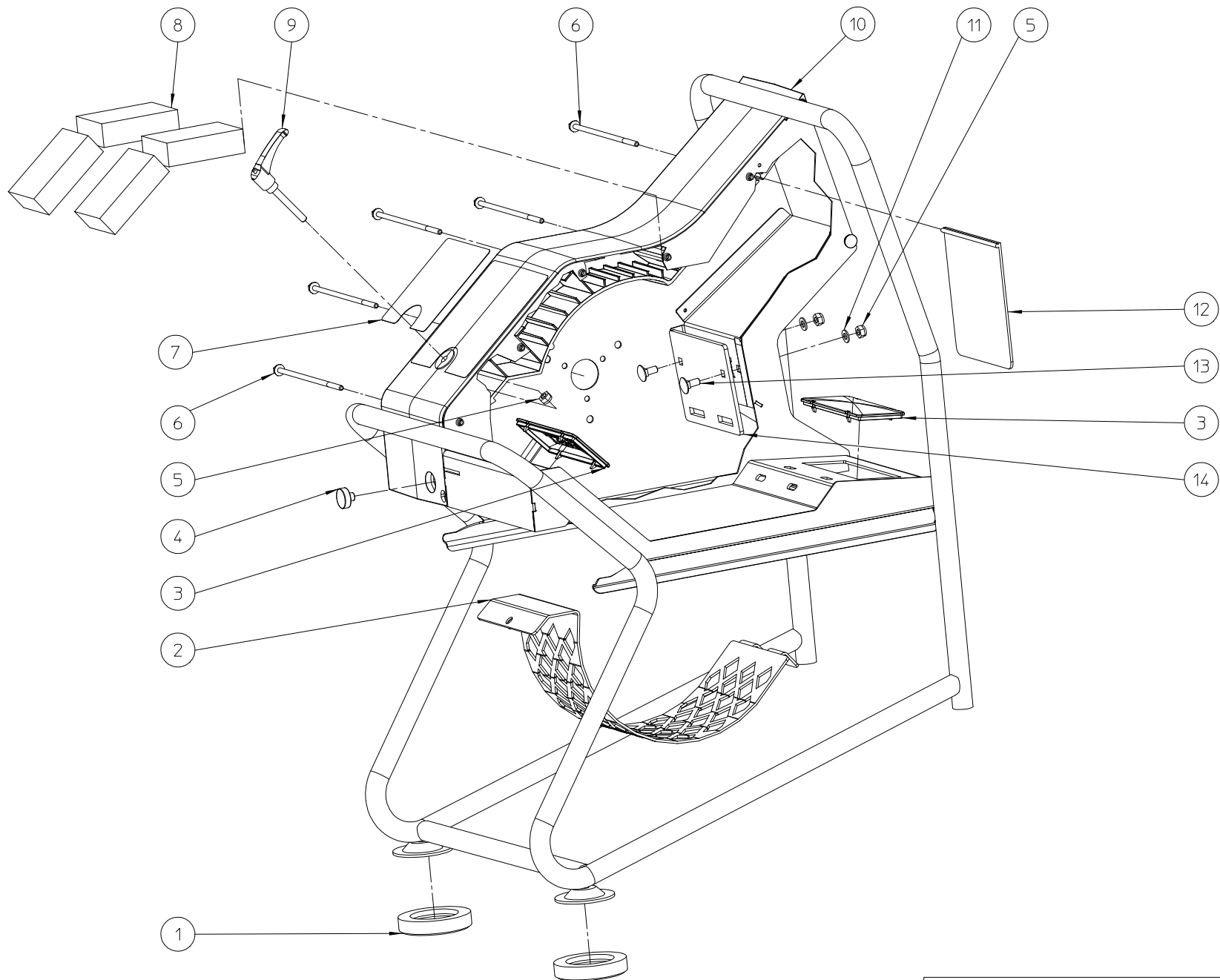
| ELIET MAESTRO CITY -- ROTOR | | | | | | |
|-----------------------------|----------------|-----|---|------|------------|--|
| NO | MMA 01 221 240 | REV | 1 | DATE | 2017/09/12 | |

| # | N° article | Description | quantité |
|----|----------------|--|----------|
| 1 | MPA 01 221 100 | rotor maestro | 1 |
| 2 | | référence couteaux LIBU401100102 | 1 |
| 3 | MPA 01 221 040 | chassis city | 1 |
| 4 | BS 531 000 600 | rondelle m6 din 125 | 3 |
| 5 | BS 512 000 620 | vis m6x20 din 933 | 3 |
| 6 | BS 531 001 000 | rondelle m10 din 125 | 1 |
| 7 | BS 511 041 052 | vis unf 3/8" x 5" | 1 |
| 8 | BR 500 103 800 | bouchon en caoutchouc 42x38x1.6 | 1 |
| 9 | BQ 505 010 010 | autocollant d'identification ce 120x30 | 1 |
| 10 | BS 532 008 356 | rondelle de carrosserie m8x35x3 | 8 |
| 11 | BS 502 000 800 | ecrou a nylon m8 din 985 | 10 |
| 12 | MPA 01 221 460 | support moteur | 1 |
| 13 | BS 531 000 800 | rondelle m8 din 125 | 12 |
| 14 | BS 512 000 820 | vis m8x20 din 933 | 4 |
| 15 | BS 511 000 840 | vis m8x40 din 931 | 4 |



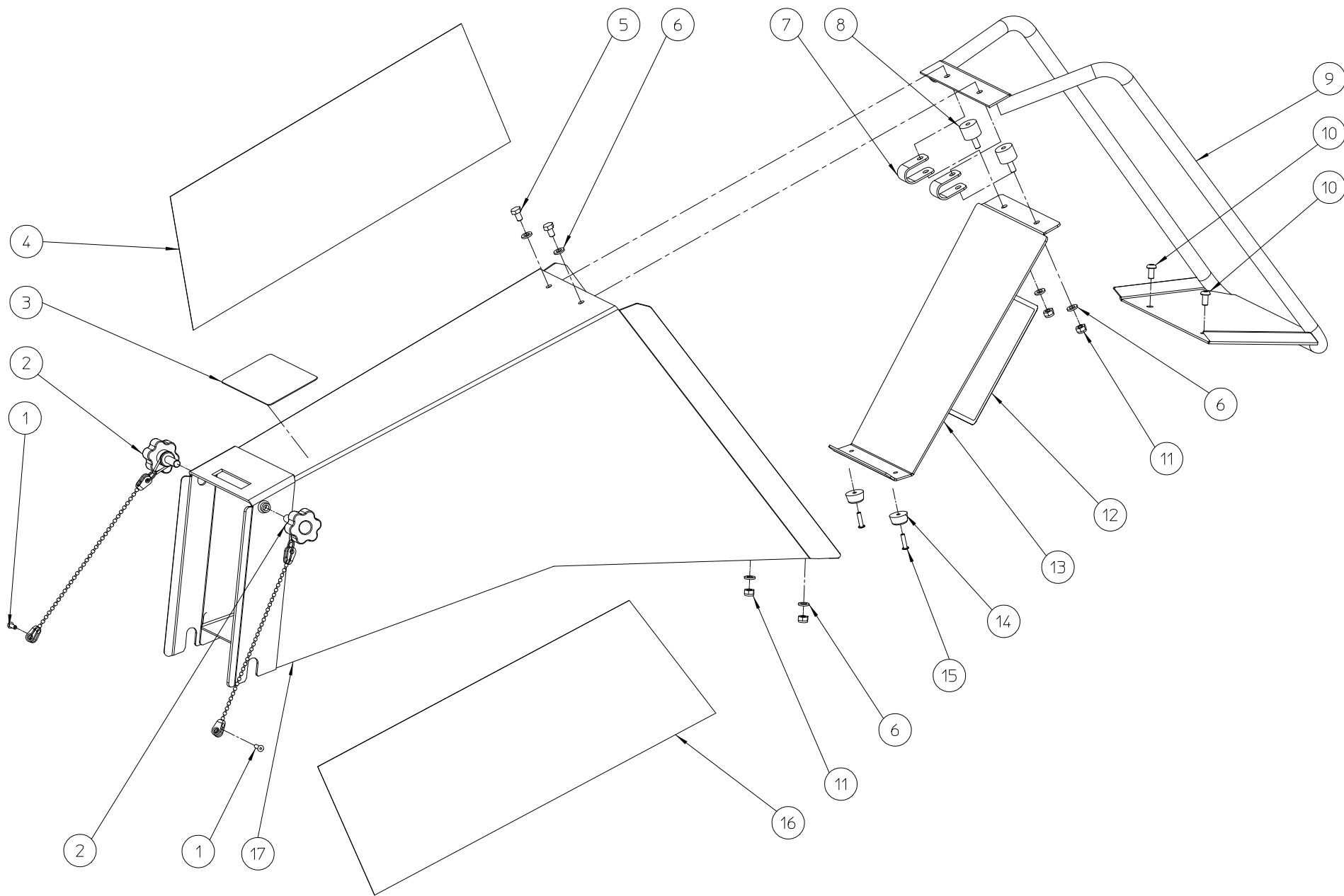
| ELIET MAESTRO CITY -- BAG | | | | | |
|---------------------------|----------------|-----|---|------|------------|
| NO | MMA 01 221 230 | REV | 1 | DATE | 2017/09/12 |

| # | N° article | Description | quantité |
|---|----------------|--------------------------|----------|
| 1 | BS 512 000 825 | vis m8x25 din 933 | 2 |
| 2 | BN 372 700 100 | poignee | 1 |
| 3 | BS 522 500 616 | vis m6x16 iso 7380 | 1 |
| 4 | BS 531 000 800 | rondelle m8 din 125 | 2 |
| 5 | BS 502 000 800 | ecrou a nylon m8 din 985 | 2 |
| 6 | BQ 501 010 090 | autocollant eliet 100x35 | 1 |
| 7 | MPA 01 221 090 | support sac | 1 |
| 8 | BQ 348 020 030 | sac maestro city | 1 |



| ELIET MAESTRO CITY -- CHASSIS | | | | | |
|-------------------------------|----------------|-----|---|------|------------|
| NO | MMA 01 221 250 | REV | 1 | DATE | 2017/09/12 |

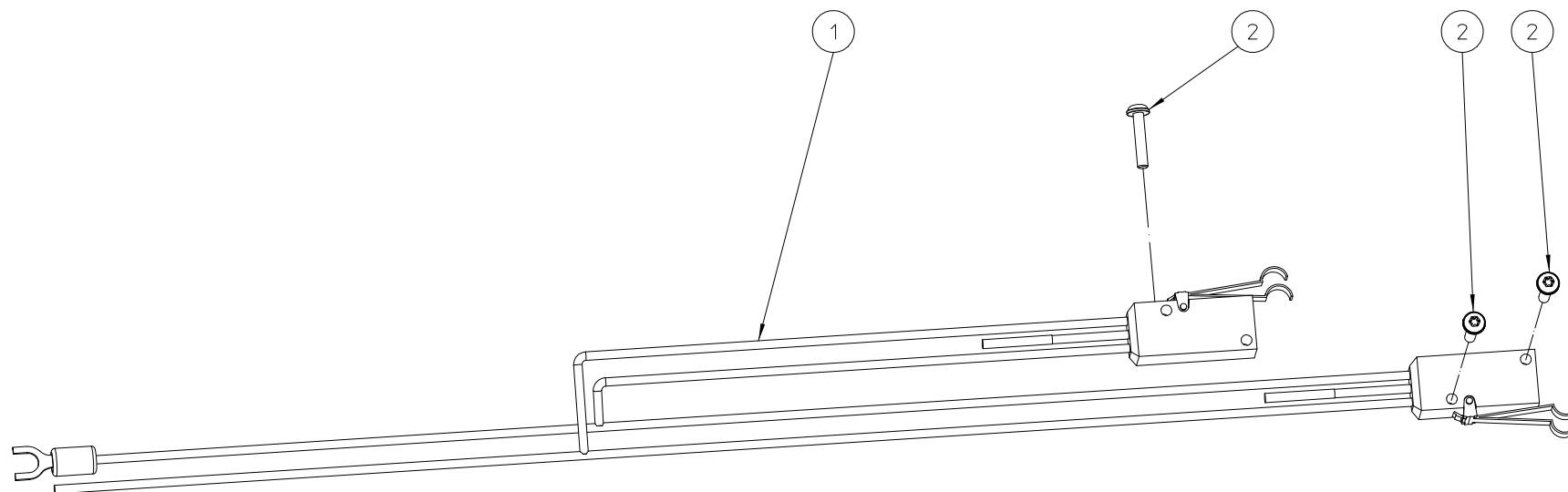
| # | N° article | Description | quantité |
|----|----------------|--------------------------------------|----------|
| 1 | BR 900 000 110 | chaussette de caoutchouc dia 90x18mm | 2 |
| 2 | MPA 01 221 430 | grille standard | 1 |
| 3 | BR 930 220 040 | verre | 2 |
| 4 | BE 120 040 070 | magnet maestro | 1 |
| 5 | BS 502 000 800 | ecrou a nylon m8 din 985 | 3 |
| 6 | BS 511 400 657 | vis a embase dentee m6x170 din 6921 | 5 |
| 7 | BQ 505 010 500 | autocollant securite grille | 1 |
| 8 | BQ 158 000 204 | mousse isolante | 4 |
| 9 | BN 530 108 601 | manette de blocage | 1 |
| 10 | BR 930 220 030 | paroi chambre de broyage | 1 |
| 11 | BS 531 000 800 | rondelle m8 din 125 | 2 |
| 12 | BR 900 001 730 | caoutchouc | 1 |
| 13 | BS 554 100 820 | vis m8x20 din 603 | 2 |
| 14 | MPA 01 221 420 | contre lame | 1 |



ELIET MAESTRO CITY -- FRONT SIDE

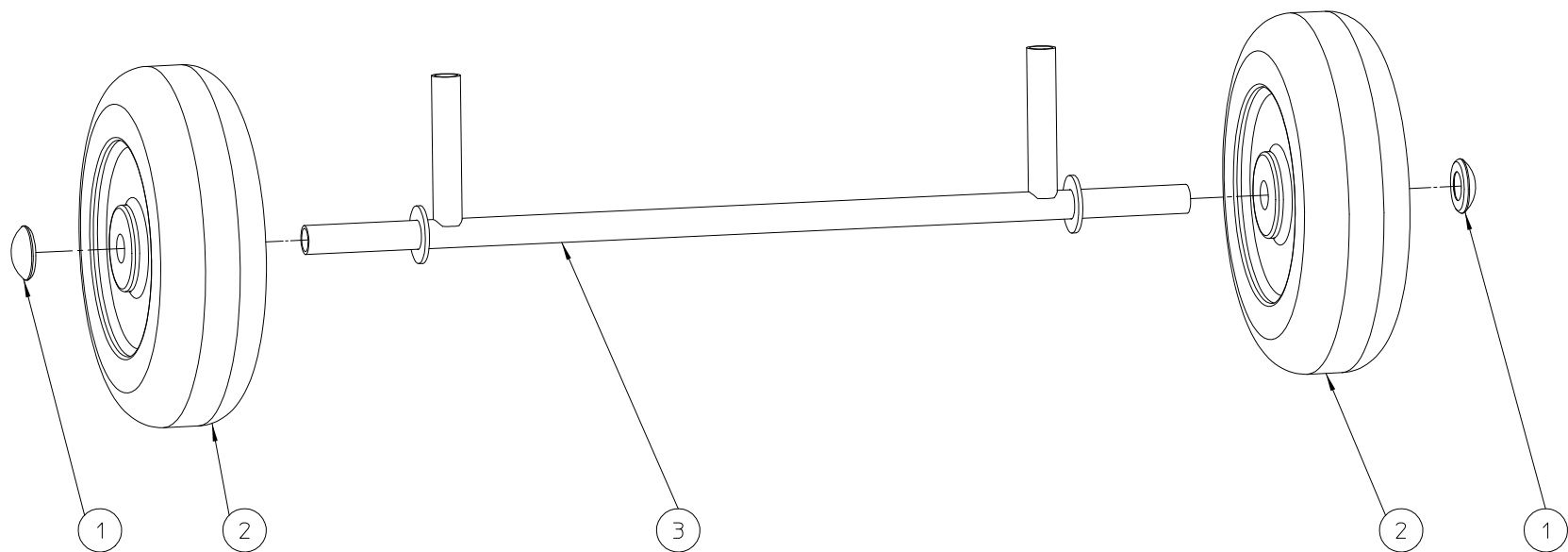
| | | | | | |
|----|----------------|-----|---|------|------------|
| NO | MMA 01 221 210 | REV | 1 | DATE | 2017/09/12 |
|----|----------------|-----|---|------|------------|

| # | N° article | Description | quantité |
|----|----------------|--|----------|
| 1 | BB 222 104 120 | rivet alu 3.9x12 din 7337 b | 2 |
| 2 | BN 632 508 250 | bouton crantes | 2 |
| 3 | BQ 505 010 480 | autocollant-demontage-tremie | 1 |
| 4 | BQ 501 020 320 | autocollant maestro city (d) | 1 |
| 5 | BS 512 000 610 | vis m6x10 din 933 | 2 |
| 6 | BS 531 000 600 | rondelle m6 din 125 | 6 |
| 7 | BR 910 000 020 | attache de securite ertalon 80x20x2 | 2 |
| 8 | BR 600 220 150 | caoutchouc anti-vibration 20x15b m6x15 | 2 |
| 9 | MPA 01 221 070 | poignee | 1 |
| 10 | BS 522 500 612 | vis m6x12 iso 7380 | 2 |
| 11 | BS 502 000 600 | ecrou a nylon m6 din 985 | 4 |
| 12 | BQ 505 010 140 | autocollant securite 150x100 (tremie) | 1 |
| 13 | MPA 01 221 440 | cache | 1 |
| 14 | BR 625 020 100 | caoutchouc de butee 20x10 | 2 |
| 15 | BB 221 104 160 | rivet alu 3.9x16 din 7337 a | 2 |
| 16 | BQ 501 020 310 | autocollant maestro city (g) | 1 |
| 17 | MPA 01 221 060 | entonnoir | 1 |



| ELIET MAESTRO -- ELECTRICAL SYSTEM | | | | | |
|------------------------------------|----------------|-----|---|------|------------|
| NO | MMA 01 221 160 | REV | 1 | DATE | 2017/09/12 |

| # | N° article | Description | quantité |
|---|----------------|--------------------------------|----------|
| 1 | BE 099 002 201 | cablage maestro | 1 |
| 2 | BS 540 100 316 | vis auto-taraudeuses torx 3x16 | 3 |



| ELIET MAESTRO -- WHEEL | | | | | |
|------------------------|----------------|-----|---|------|------------|
| NO | MMA 01 221 120 | REV | 1 | DATE | 2017/09/12 |

| # | N° article | Description | quantité |
|---|----------------|---------------|----------|
| 1 | BB 011 000 200 | starlock 20mm | 2 |
| 2 | BW 024 520 010 | roue 3.00-4 | 2 |
| 3 | MPA 01 221 080 | support-roue | 1 |