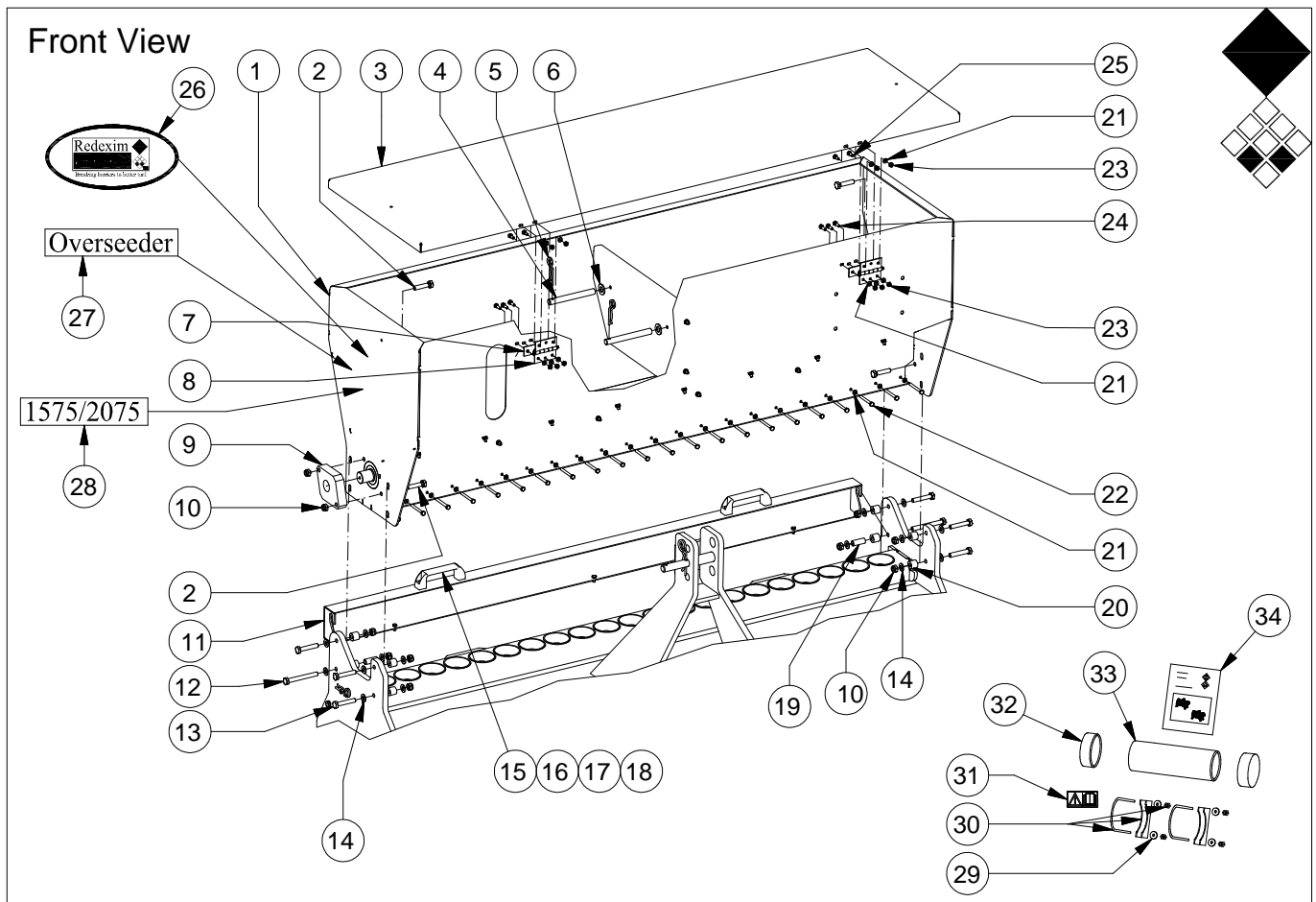


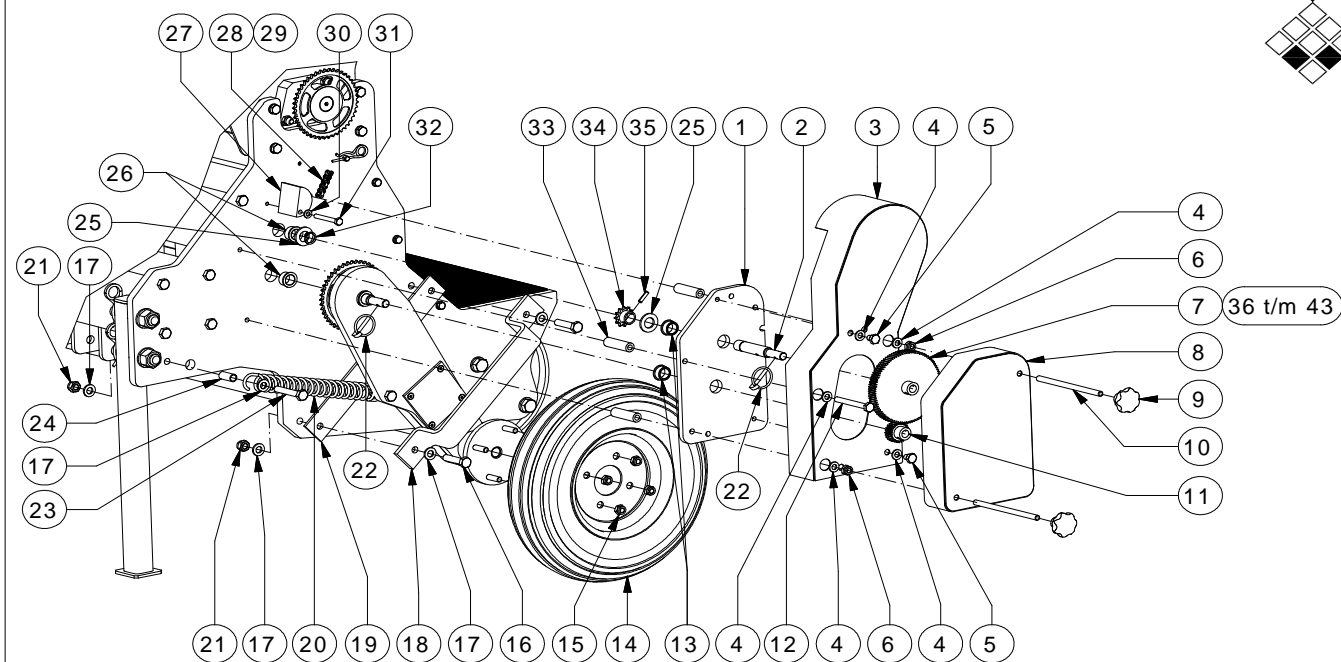
Parts manual





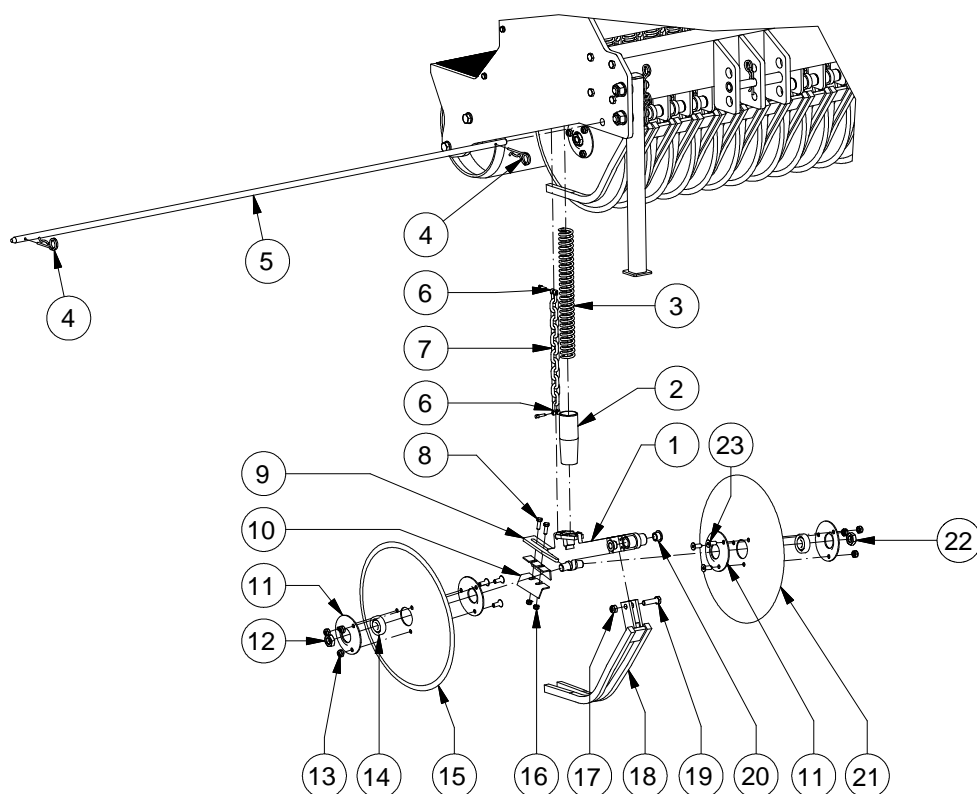
Redexim-Charterhouse Overseeder 1275-1575-2075 pag 03 code 1022

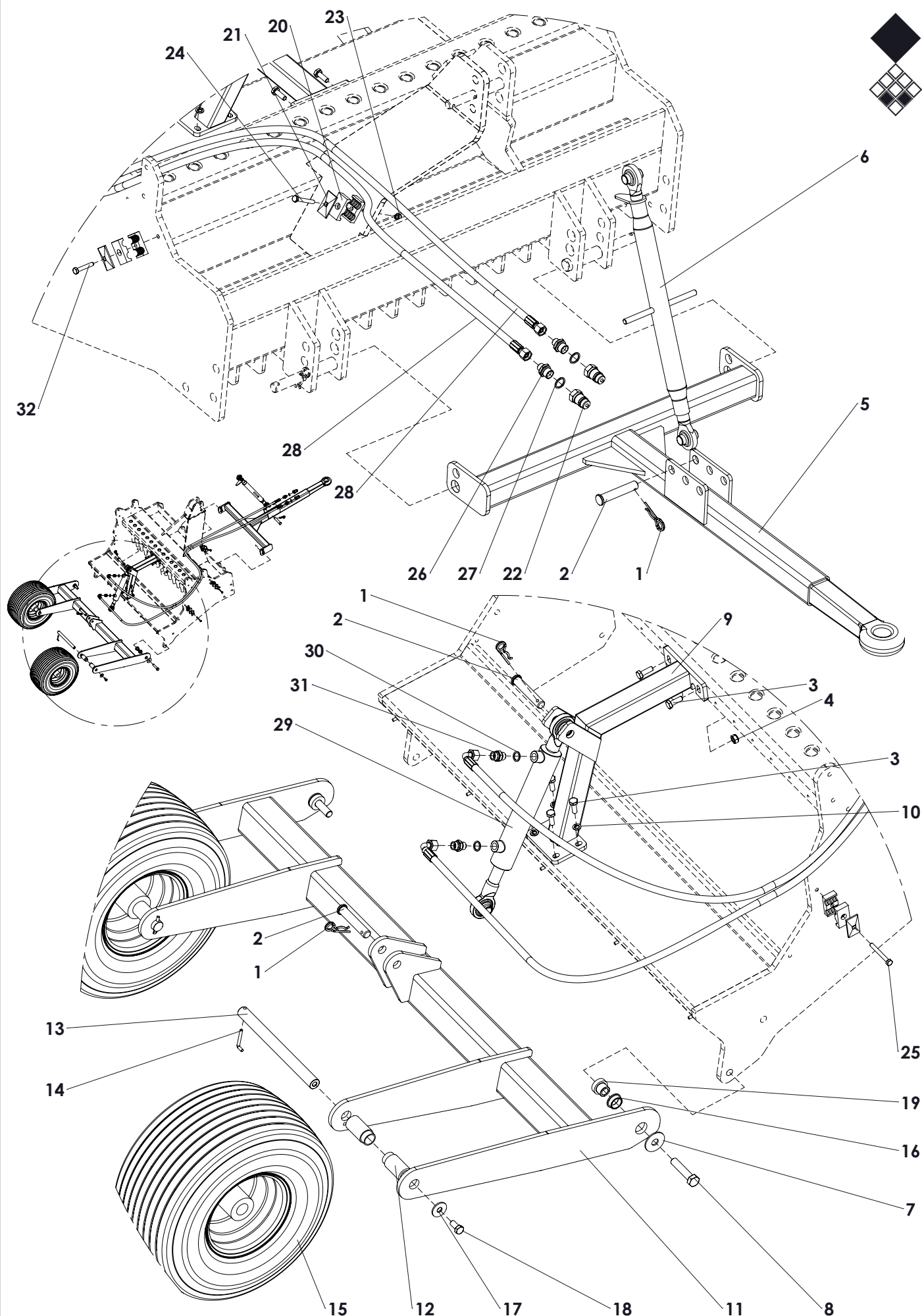
	PART # 1275	PART # 1575	PART # 2075	DESCRIPTION	REMARKS	QUA
1	494.122.440	494.150.046	494.200.046	Seed Hopper		1
2	same	802.100.450	same	Bolt M10 x 45		4
3	468.029.127	468.029.160	468.029.210	Lid Seed Hopper		1
4	same	414.151.350	same	Gear Storage Axle		2
5	same	523.030.750	same	R-Clip Ø3		2
6	same	864.140.030	same	Washer M14		2
7	same	464.030.630	same	Hinge Distance Plate		2/2/3
8	same	899.100.630	same	Hinge For Seed Hopper Lid		2/2/3
9	same	444.251.030	same	Bearing Block Overseeder		2
10	same	830.100.100	same	Self Lock Nut M10		12
11	494.129.090	494.159.090	494.159.092	Seed Measure Lid		1
12	same	802.100.900	same	Bolt M10 x 90		2
13	same	802.100.550	same	Bolt M10 x 55		6
14	same	864.100.030	same	Washer M10		16
15	same	444.151.250	same	Handle		2
16	same	814.060.200	same	Hex. Socket Head Cap Screw M6x20		4
17	same	864.060.030	same	Washer M6		4
18	same	830.060.060	same	Self Lock Nut M6		4
19	same	402.100.350	same	Slide Bush Seed Measure Lid		2
20	same	402.100.180	same	Distance Bush Seedhopper		8
21	same	864.060.030	same	Washer M6		32
22	same	802.060.600	same	Bolt M6 x 60		22
23	same	830.060.060	same	Self Lock Nut M6		10/10/15
24	same	802.060.200	same	Bolt M6 x 20		6/6/9
25	same	802.060.180	same	Bolt M6 x 18		4/4/6
26	same	900.260.403	same	Redexim Logo		2
27	same	922.260.402	same	Label Overseeder		2
28	911.260.446	911.260.428	911.260.432	Label 1275/1575/2075		2
29	same	864.080.040	same	Large Washer M8		4
30	same	848.901.200	same	U-Bolt Complete		2
31	same	900.280.402	same	Safety Label Manual		1
32	same	991.140.600	same	Cover Manual / Tool Box		2
33	same	991.143.400	same	Manual / Tool Box Empty		1
34	same	922.120.202	same	Manual		1



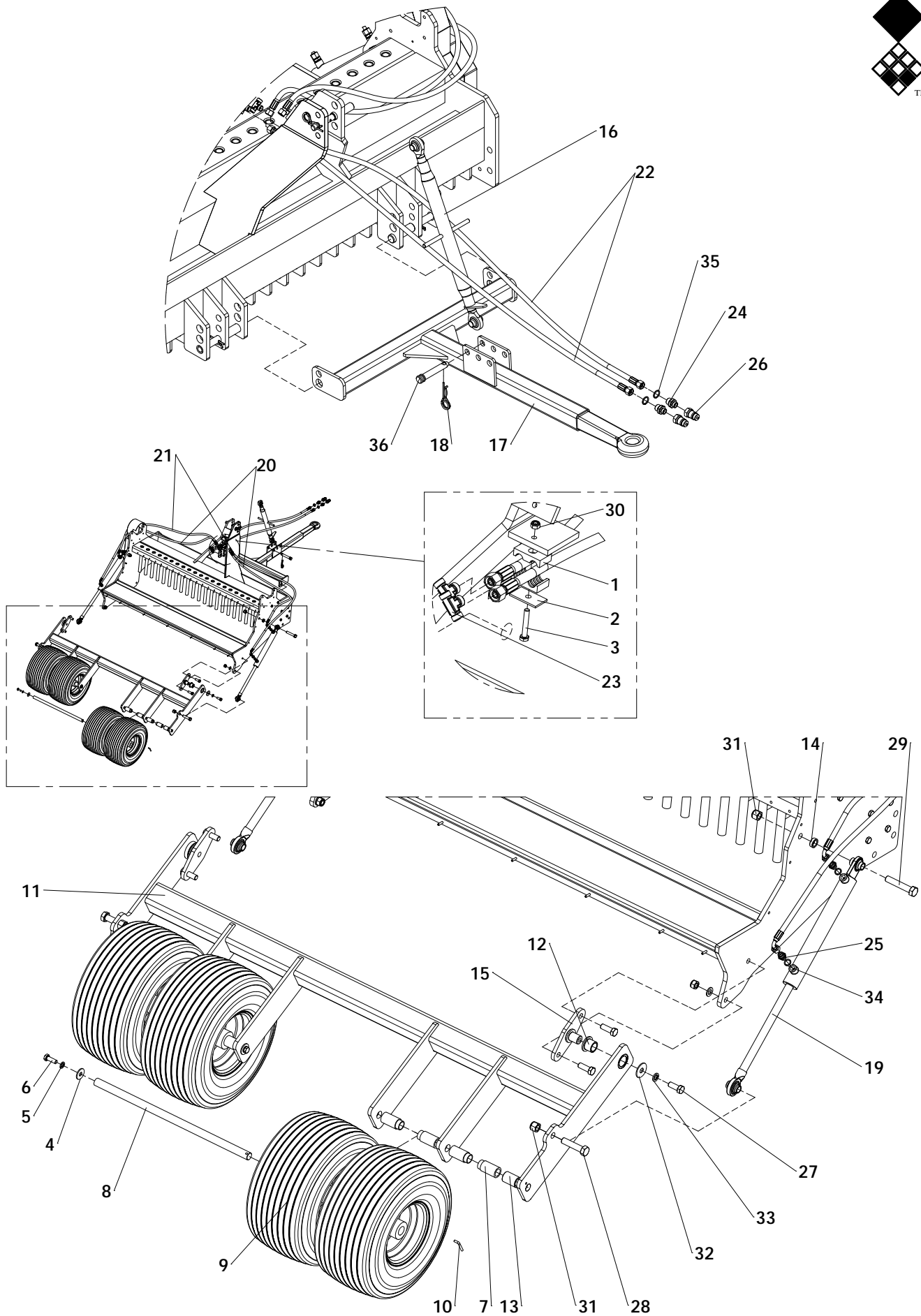
Redexim-Charterhouse Overseeder 1275-1575-2075 pag 05 code 1022

	PART # 1275	PART # 1575	PART # 2075	DESCRIPTION	REMARKS	QUA
1	same	468.103.000	same	Gear Plate		1
2	same	418.201.222	same	2nd Gearbox Axle		1
3	same	470.100.528	same	Cover Chains		1
4	same	864.100.030	same	Washer M10		5
5	same	802.100.120	same	Bolt M10 x 12		2
6	same	830.100.100	same	Self Lock Nut M10		2
7	same	432.151.450	same	Seeding Gear 95 Teeth		1
8	same	470.553.000	same	Gear Cover		1
9	same	836.100.260	same	Knob M10		2
10	same	852.101.600	same	Threaded Rod M10 x 160		2
11	same	432.150.400	same	Seeding Gear 25 Teeth		1
12	same	802.100.850	same	Bolt M10 x 85		1
13	same	442.200.130	same	Bearing Bush Gearplate		2
14	same	511.400.106	same	Wheel		1
15	same	844.100.100	same	Wheel Nut M10 x 1.25		4
16	same	802.120.500	same	Bolt M12 x 50		2
17	same	864.120.030	same	Washer M12		6
18	same	466.083.950	same	Guide Swingarm		1
19	same	444.053.800	same	Guide Bar Sideplate		1
20	same	575.302.250	same	Spring Wheelaxle		1
21	same	830.120.120	same	Self Lock Nut M12		3
22	same	523.060.320	same	Linch Pin Ø6		2
23	same	802.120.650	same	Bolt M12 x 65		1
24	same	406.150.300	same	Distance Bush Spring Wheel		1
25	same	864.200.044	same	Washer M20		2
26	same	442.200.150	same	Bearing Bush Gearaxle		2
27	same	444.500.600	same	Chain Tensioner		1
28	same	631.090.809	same	Chain 3/8"		1
29	same	638.090.090	same	Chain Connector 3/8"		1
30	same	864.080.030	same	Washer M8		1
31	same	802.080.600	same	Bolt M8 x 60		1
32	same	870.020.120	same	Cir Clip Ø20		1
33	same	406.100.600	same	Spacer For Gearplate		3
34	same	430.150.200	same	Chainwheel 2nd Gearaxle		1
35	same	878.060.240	same	Roll Pin Ø6 x 25		1
36	same	432.151.230	same	Seeding Gear 80 Teeth		1
37	same	432.151.150	same	Seeding Gear 75 Teeth		1
38	same	432.151.050	same	Seeding Gear 68 Teeth		1
39	same	432.150.960	same	Seeding Gear 62 Teeth		1
40	same	432.150.900	same	Seeding Gear 58 Teeth		1
41	same	432.150.810	same	Seeding Gear 52 Teeth		1
42	same	432.150.700	same	Seeding Gear 45 Teeth		1
43	same	432.150.630	same	Seeding Gear 40 Teeth		1

[illegible]



ITEM	PART NUMBER	DESCRIPTION	REMARKS	QUA
1	523.030.750	R-Clip Round 3, DIN 11024		3
2	2490825	Top Link Pin		3
3	804.100.300	Bolt M10 x 30 - ISO 4017		6
4	830.100.100	Self Lock Nut M10 - ISO 10511		2
5	494.063.072	Drawbar Bogy		1
6	478.257.970	Toplink		1
7	864.160.031	Large washer M16 - DIN 9021		2
8	802.167.500	Bolt M16 x 75 - ISO 4014		2
9	462.504.260	Cylinder bracket		1
10	866.100.020	Spring Washer M10 - DIN 127		4
11	494.070.134	Weld Assy Bogy OS1275		1
12	404.250.700	Distance Bush Wheel		4
13	416.252.940	Wheel Shaft		2
14	424.060.480	Lock Pin		2
15	511.542.236	Wheel Complete		2
16	404.250.130	Nylon collar bush Ø35/Ø30/Ø25 L=12.5		2
17	864.120.031	Large washer M12 - DIN 9021		2
18	804.120.250	Bolt M12 x 25 - ISO 4017		2
19	404.170.270	Bush Bogy		2
20	547.150.150	Hose clamp double 15mm		6
21	547.070.510	Cover plate hose clamp 2x15 - 2x18		3
22	545.210.800	Quick connector male 1/2"		2
23	830.080.080	Self Lock Nut M8 - ISO 10511		1
24	802.080.600	Bolt M8 x 60 - ISO 4014		1
25	802.080.700	Bolt M8 x 70 - ISO 4014		1
26	543.170.210	Nipple BSP 3_8" x 1_2" 60deg		2
27	874.210.020	Copper washer 1_2		2
28	541.173.200	Hose NSK10 L=3200 1xPF10-6 1xPGLO10-18-90		2
29	534.252.006	Hydr. Cylinder 25/40, stroke 200 - 2 x 19.4		1
30	874.170.020	Copper washer 3_8		2
31	544.170.120	Nipple BSP 3_8" x pipe 12 (M18)		2
32	802.080.450	Bolt M8 x 45 - ISO 4014		1



ITEM	PART NUMBER	DESCRIPTION	REMARKS	QUA
1	547.150.150	Hose clamp double 15mm		2
2	547.070.510	Cover plate hose clamp 2x15 - 2x18		1
3	802.080.500	Bolt M8 x 50 - ISO 4014		1
4	864.120.031	Large washer M12 - DIN 9021		2
5	866.120.020	Spring Washer M12 - DIN 127		2
6	804.120.350	Bolt M12 x 35 - ISO 4017		2
7	404.250.700	Distance Bush Wheel		8
8	2499188	Wheel shaft		2
9	511.542.236	Wheel Complete		4
10	424.060.480	Lock Pin		2
11	494.177.060	Bogy frame OS1575		1
12	442.280.300	Bearing bush		2
13	406.250.502	Distance bush Ø35/Ø25 L=50		2
14	406.200.100	Distance bush Ø30/Ø20 L=10		2
15	470.121.890	Pivot plate		2
16	478.257.970	Toplink		1
17	494.063.072	Drawbar Bogy		1
18	523.051.000	R-clip Round 6, DIN 11024		1
19	534.253.000	Hydraulic cilinder		2
20	541.171.300	Hose NSK10-3/8" L=1300 1xPGLO1018 + 1xPLGO101890		2
21	541.171.550	Hose NSK10-3/8" L=1550 1xPGLO1018 + 1xPLGO101890		2
22	541.171.800	Hose NSK10-3/8" L=1800 2xPGLO1018		2
23	544.124.125	T-Connector 12x12x12		2
24	544.130.402	Nipple BSP 1_2" x pipe 12 (M18)		2
25	544.170.120	Nipple BSP 3_8" x pipe 12 (M18)		4
26	545.210.800	Quick connector male 1/2"		2
27	804.160.400	Bolt M16 x 40 - ISO 4017		2
28	808.190.830	Hex Bolt 0.75"-16x3.25" UNF - ANSI B18.2.1		2
29	808.191.000	Hex Bolt 3/4-16 L=4 UNF		2
30	830.080.080	Self Lock Nut M8 - ISO 10511		1
31	840.190.230	SL Nut 3/4"-16 UNF		4
32	864.160.031	Large washer M16 - DIN 9021		2
33	866.160.020	Spring Washer M16 - DIN 127		2
34	874.170.020	Copper washer 3_8		4
35	874.210.020	Copper washer 1_2		2
36	2490825	Top Link Pin		1